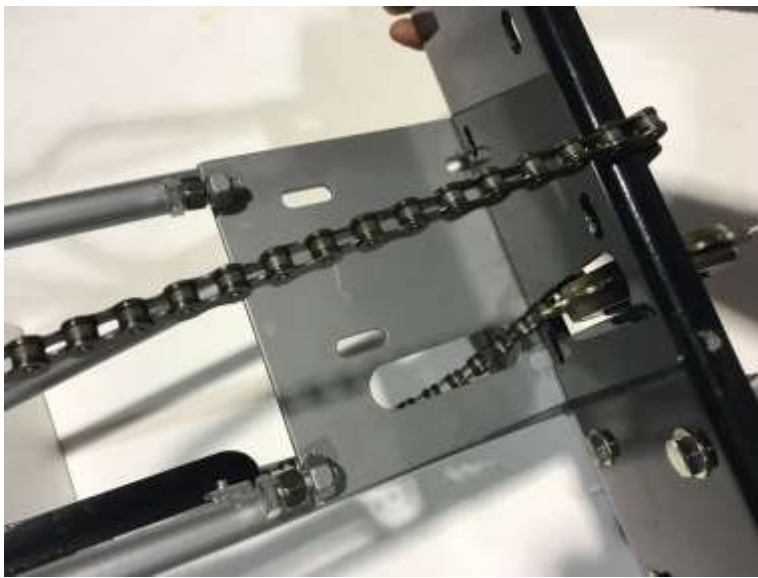
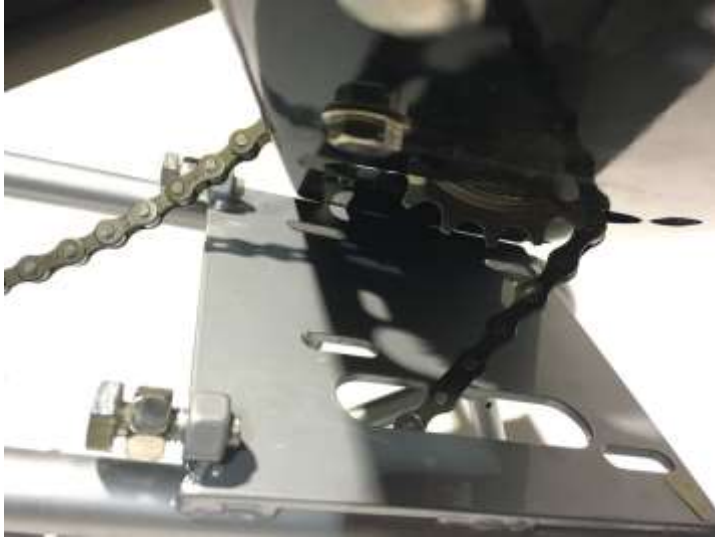


001 Orient the Rear Axle Plate so that the rear sprocket sets into large oval slot. Be sure to avoid twisting the chain.



002 - Orient the Rear Axle Plate so that the rear sprocket sets into large oval slot. Be sure to avoid twisting the chain.

003 - Mount chain onto front pedal sprocket



004



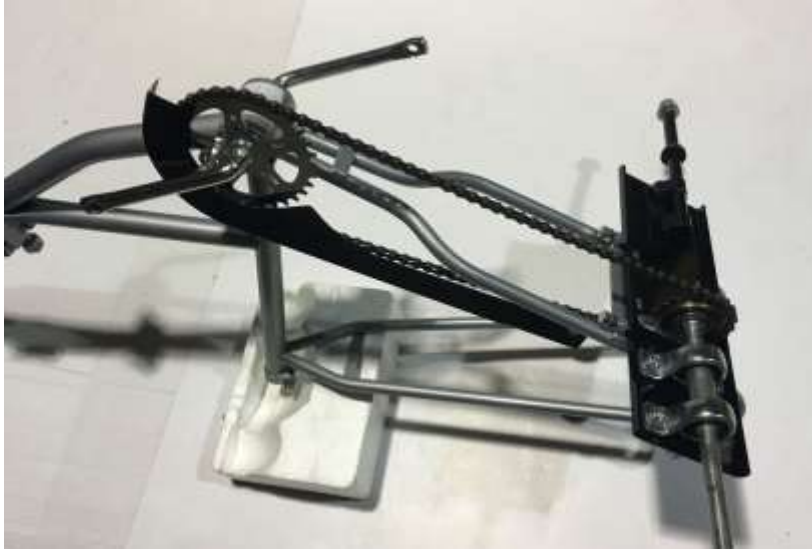
005 - Mount chain onto rear sprocket



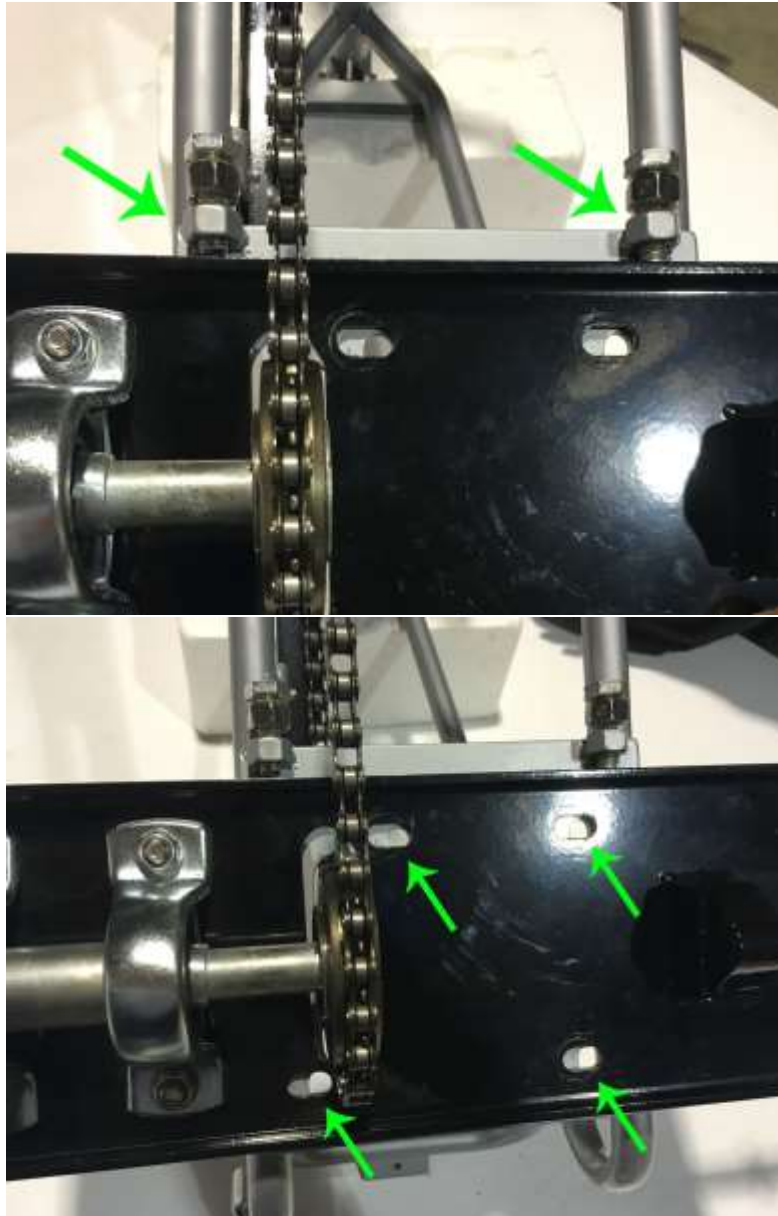
006



007 - Adjust the Rear Axle Plate forward/rear to fine-tune Chain tension (neither tight nor too slack). Proper tension is just enough slack for chain to wobble up/down 1/4 inch.



008 - Line up the 4 holes (Axle Plate to Frame Plate) Also thread the Supporting Bolts to lock-in the Chain's tension. The Supporting Bolts also ensure Axle Plate remains properly aligned to trailer frame.



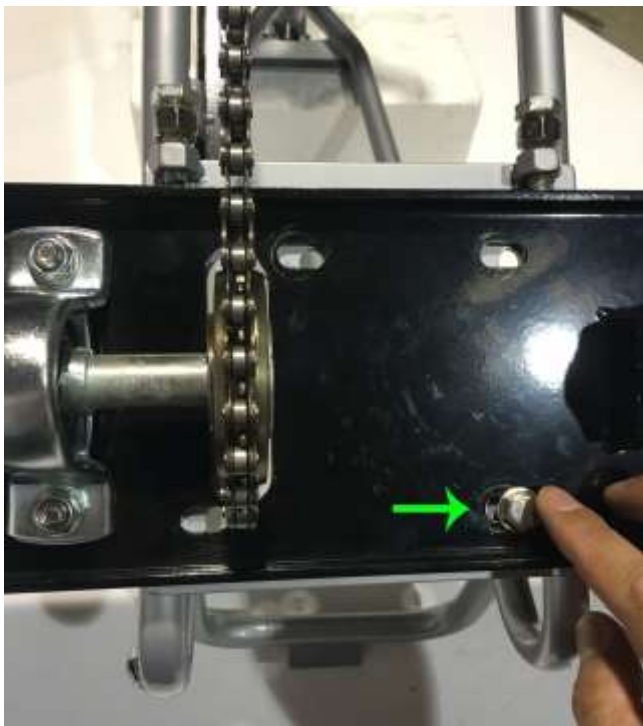
009 - Step 1: Thread Bolt to set proper depth.

Step 2: Thread Nut to lock the bolt in place.

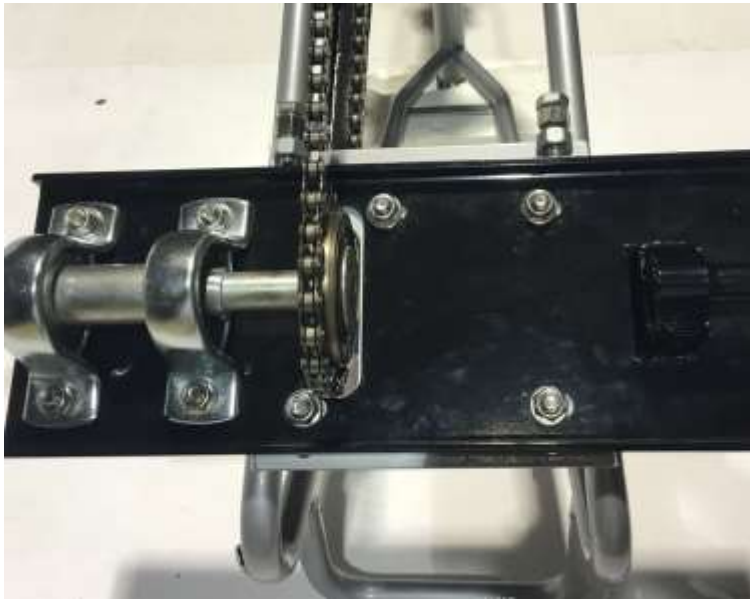


010 - Insert 1st bolt to attach Axle Plate to Frame Plate.

Make sure black Axle Plate is parallel lined to Frame Plate



011 - Insert remaining 3 bolts, hand tighten the 4 bolts, then use wrenches to securely tighten 4 bolts.



012 - Axle Set secured to Frame with Chain properly tensioned.



Mount Free Wheel to axle for Free Wheel

013 - Identify axle for Free Wheel



014 - Identify the Free Wheel





Mount Drive Wheel to axle for Drive Wheel

015 - Identify axle for Drive Wheel (key locks into Drive Wheel slot)



016 - Identify the Drive Wheel



017 - Use wrench to secure Nut to Axle



018



019 - How to unfold and lock the collapsible frame. Caution: do not insert finger into hinge!



020 - Twist nut to tighten/lock latch



021 - Cover the hinge with protective wrap



022 - Secure Extension Stem to Frame Clamp



023 - Extension Stem stands vertical - not angled rearward.



024 - Threaded end is up.



025 - Secure Handlebar to top of Extension Stem.

Make sure all the Clamp is level before tightening all 4 bolts.



025A



026 - Secure Seat Post to frame



027 - Adjust Seat angle position and tighten Nuts on BOTH sides



028 - Left pedal: left side of bike (rider facing forward)



029 - Thread Counter-clockwise direction





030 - Tighten with wrench



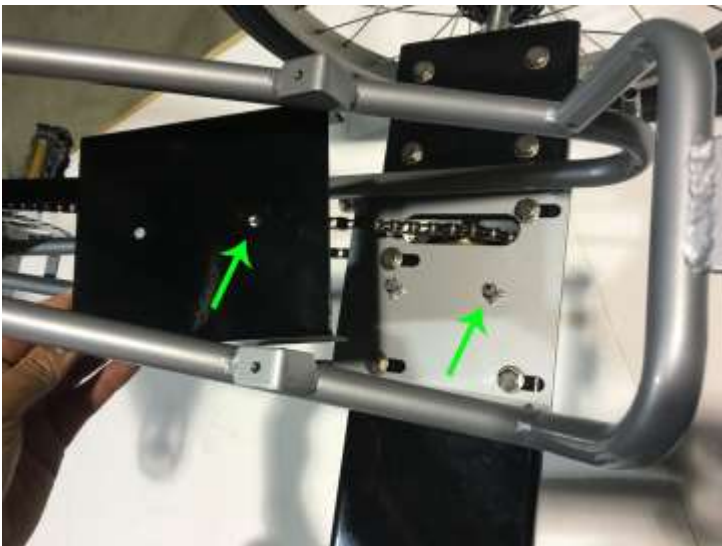
031 - Right Pedal: right side of bike (rider facing forward)



032 - Thread Clockwise direction



033 - Rear Sprocket Cover Plate



034 - Secure with 2 bolts



035- Attach Rear Platform to frame (secure 2 front bolts first, then rear bolt with Reflector sandwiched between)



036 –



037



